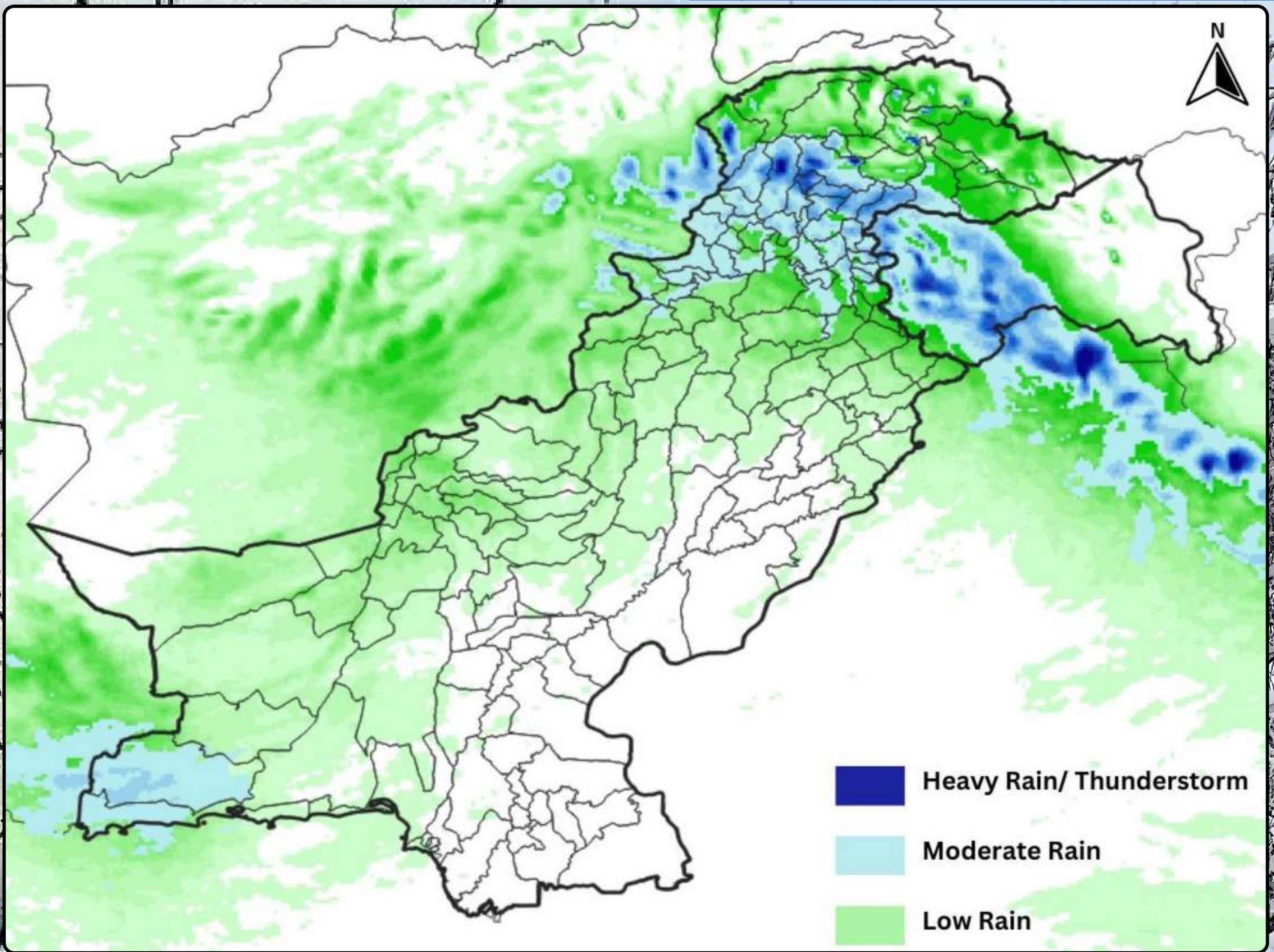




# PRECIPITATION PROJECTION (25 FEBRUARY 2024 TO 27 FEBRUARY 2024)

Developed by National Emergencies Operation Center  
National Disaster Management Authority



## PRECIPITATION ADVISORY

- A westerly wave is likely to approach northern and western parts of the country from 25th February and will persist 27th February, 2024.
- Anticipated weather patterns indicate the likelihood of substantial **rain/snow/thunderstorm** in various parts of the country.

### Gilgit Baltistan/Kashmir:

- Rain, wind, and thunderstorms are expected with snowfall over the hills in Gilgit-Baltistan (Diamir, Astore, Ghizer, Skardu, Hunza, Gilgit, Ghanche, Shigar) and Kashmir (Neelum Valley, Muzaffarabad, Poonch, Hattian, Bagh, Haveli, Sudhanoti, Kotli, Bhimber, Mirpur) from the night of 25th to 27th February, with occasional gaps. Isolated thunderstorms are also possible during this period.

### Khyber Pakhtunkhwa:

- Anticipate rain, wind, and thunderstorms with snowfall over the hills in Chitral, Dir, Swat, Shangla, Kohistan, Buner, Mansehra, Abbottabad, Haripur, Swabi, Mardan, Charsadda, Nowshera, Peshawar, Mohmand, Bajaur, Khyber, Kurram, Kohat, Bannu, and Waziristan from the night of 25th to 27th February, with occasional gaps. Isolated thunderstorms are also possible during this period.

### Punjab/Islamabad:

- Light to moderate rain, wind, and thunderstorms is expected in Islamabad/Rawalpindi, Attock, Chakwal, Jhelum, Mianwali, Khushab, Sargodha, Bhakkar, Layyah, and Dera Ghazi Khan on the evening/night of 26th and 27th February. Isolated thunderstorms are also possible during this period. Snowfall over the hills is also expected in the areas of Murree, Galiyat

### Balochistan:

- Rain, wind, and thunderstorms are expected in Chaghi, Noushki, Kharan, Panjgur, Gwadar, Awaran, Khuzdar, Kalat, Lasbella, Sibbi, Quetta, Ziarat, Chaman, Pishin, Qila Abdullah, Qila Saifullah, Zhob, Sherani, Barkhan, Musakhel, and Kohlu on the night of 25th and 26th February.

### Sindh:

Expect cloudy weather with gusty winds in southern parts of the province on 25th and 26th February.

### Potential Impacts:

- Anticipate slippery road conditions, travel disruptions and road closures in Precipitation (Rain/Snow) affected areas.
- Snow avalanches and localized landslides may occur due to Precipitation (Rain/Snow) in high-elevated areas.
- Power outages may be possible due to the weight of snow on power lines.

### Precautions:

- Avoid non-essential travel during the snowfall projection periods.
- Stay updated on weather and road conditions through official channels and local news.
- Use caution while driving, and equip your vehicle with snow chains if necessary.
- Dress warmly in layers and cover exposed skin to protect against the cold.
- Report any emergencies promptly to local authorities.

